

DATAPATH  
COMICS

THE ADVENTURES OF

# CAPTAIN CONTRIBUTOR™

APPROVED  
FOR ALL AGES



HOSPITAL



IN THIS ISSUE

MY HSA BALANCE IS GROWING!  
HOW AM I GOING TO USE IT?

**WHIRLING WORRIES**

AND

DON'T TELL ME TO BE CALM!  
THE BABY IS ON ITS WAY  
AND WE'RE NOT PREPARED!

**LABOR OF LOVE**

# Health Savings Account (HSA)

HSAs are an employer-sponsored benefit account for people with a qualified high deductible healthcare plan. Participants make pre-tax contributions into their account and use the funds for out-of-pocket eligible medical expenses for themselves and their dependents.

## Triple Tax Savings!

Participants enjoy three major tax benefits:

1. Contributions to the HSA are made before taxes, saving on Federal, State, and FICA taxes
2. Withdrawals made for eligible medical expenses are tax free
3. Account earnings (interest on the balance and investment income) are tax free

## Additional HSA Benefits include:

- You own the account! If your employment status changes for whatever reason, you keep the account forever and can continue using the funds
- Invest your funds once your account balance reaches \$1,000 and grow your account quickly
- After age 55, you can contribute an additional \$1,000 over the annual limit
- Use your funds as a retirement account – starting at age 65, any withdrawals for non-qualified expenses are taxed as regular income

## Eligible Expenses

Contact your Benefits Representative for more details.

© 2023 DataPath, Inc.

## 2023/2024 Annual Contribution Limits

Participants with individual coverage:

2023: **\$3,850**  
2024: **\$4,150**

Participants with family coverage:

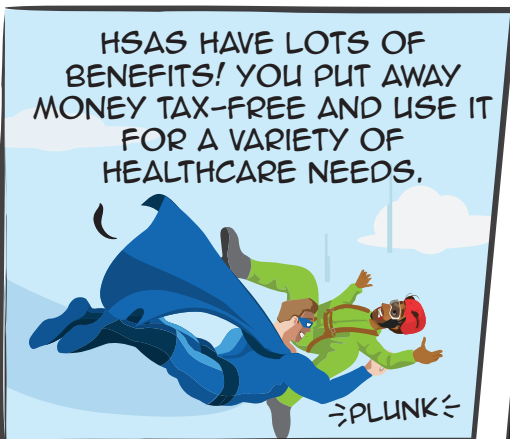
2023: **\$7,750**  
2024: **\$8,300**

 **beneliance**

### Customer Service

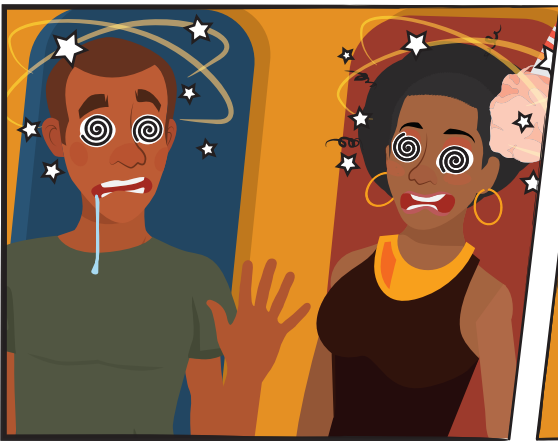
Toll-Free 877-685-0655  
benefits@beneliance.com  
beneliance.com  
PO Box 55068  
Little Rock, AR 72215

**CC** EPISODE 1 PARACHUTE PREDICAMENT



**CC** EPISODE 2: WHIRLING HSA WORRIES





# HSA Eligible Expenses

The following is a list of eligible expenses. For more detailed information, see IRS Publication 502.

Acupuncture  
Alcoholism treatment  
Allergy shots and testing  
Ambulance (ground or air)  
Artificial limbs  
Blind services and equipment  
Car controls for handicapped\*  
Chiropractor services  
Coinsurance and deductibles  
Contact lenses  
Crutches, wheelchairs, walkers  
Dental treatment  
Dentures  
Diagnostic tests  
Doctor's fees

Drug addiction treatment & facilities  
Drugs (prescription)  
Eye examinations and eyeglasses  
Home health and/or hospice care  
Hospital services  
Insulin  
Laboratory fees  
LASIK eye surgery  
Medical alert (bracelet, necklace)  
Medical monitoring and testing devices\*  
Nursing services  
Obstetrical expenses  
Occlusal guards  
Operations and surgeries (legal)  
Optometrists  
Orthodontia  
Orthopedic services  
Osteopaths

Oxygen/oxygen equipment  
Physical exams  
Physical therapy  
Psychiatric care (psychologists, psychotherapists)  
Radial keratotomy  
Schools (special, relief, or handicapped)  
Sexual dysfunction treatment  
Smoking cessation programs  
Surgical fees  
Television or telephone for the hearing impaired  
Therapy treatments\*  
Transportation (essentially and primarily for medical care; limits apply)  
Vaccinations  
Vitamins\*  
Weight loss programs\*  
X-rays



# OTC Medications and Products

The following is a list of eligible expenses. For more detailed information, see IRS Publication 502.

Acne medications & treatments  
Allergy & sinus, cold, flu & cough remedies  
Antacids & acid controllers  
Antibiotic & antiseptic sprays, creams & ointments  
Anti-diarrheals  
Anti-fungals  
Anti-gas & stomach remedies  
Anti-itch & insect bite remedies  
Anti-parasitics  
Digestive aids  
Baby care (diaper rash ointments, teething gel, rehydration fluids, etc.)  
Bandages and bandaids  
Breast pumps for nursing mothers  
Braces & supports  
Contact lens solution  
Contraceptives (condoms, gels, foams, suppositories, etc.)  
CPAP equipment & supplies

Diabetic testing supplies/equipment  
Durable medical equipment (power chairs, walkers, wheelchairs, etc.)  
Eczema & psoriasis remedies  
Eye drops, ear drops, nasal sprays  
First aid kits  
Hemorrhoidal preparations  
Home diagnostic (pregnancy tests, ovulation kits, thermometers, blood pressure monitors, etc.)  
Hydrogen peroxide, rubbing alcohol  
Laxatives  
Medicated bandaids & dressings  
Menstrual care products

Motion sickness remedies  
Nicotine patches and medications, smoking cessation aids  
OTC varieties of Insulin  
Personal protection equipment (PPE)  
Pain relievers (aspirin, ibuprofen, acetaminophen, naproxen, etc.)  
Reading glasses  
Sleep aids & sedatives  
Wart removal remedies, corn patches



# WORDFIND

INVESTING

ROLLOVER

REIMBURSEMENT

SAVINGS

DEBIT CARD

PORTABLE

INJURY

ILLNESS

EYE CARE

DENTAL

H	I	P	Z	X	C	O	I	L	M	J	L	F
I	N	J	U	R	Y	H	B	D	A	R	S	K
L	V	A	L	I	V	E	J	E	N	O	D	O
P	E	R	U	D	Q	B	I	B	W	L	E	R
G	S	E	R	F	E	U	K	I	P	L	O	E
Z	T	J	A	R	V	N	B	T	S	O	Y	I
I	I	C	S	K	E	P	T	C	I	V	L	M
P	N	L	U	E	Y	E	C	A	R	E	X	B
J	G	O	L	Z	A	P	E	R	L	R	F	U
G	T	Y	I	N	W	H	O	D	R	E	N	R
O	C	A	P	E	E	K	B	P	O	W	I	S
S	A	V	I	N	G	S	Q	Y	L	D	V	E
A	W	P	L	N	H	B	S	R	F	N	O	M
T	E	G	B	M	P	O	R	T	A	B	L	E
H	K	L	B	C	X	O	R	I	L	C	D	N
E	I	E	I	O	L	M	A	S	K	V	M	T

# CROSSWORD

DOWN

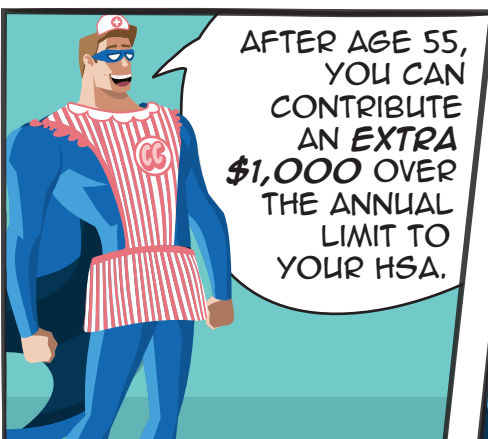
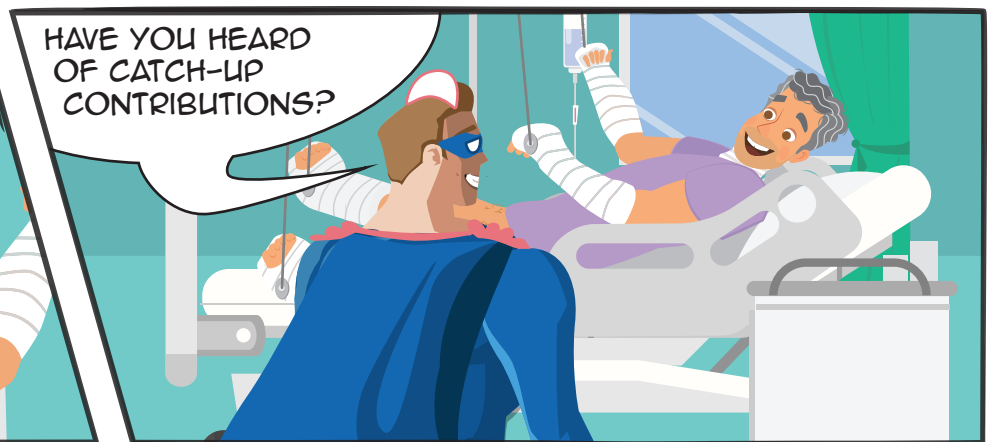
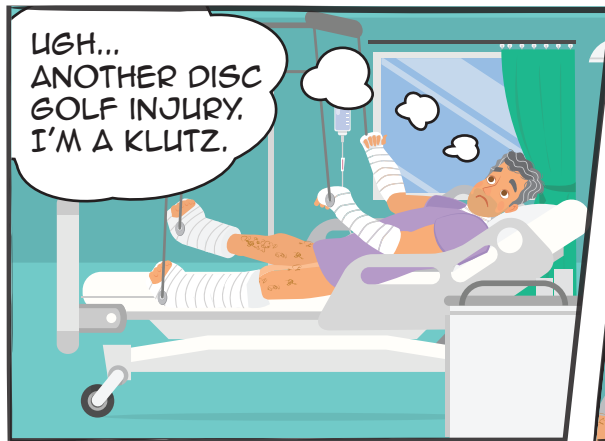
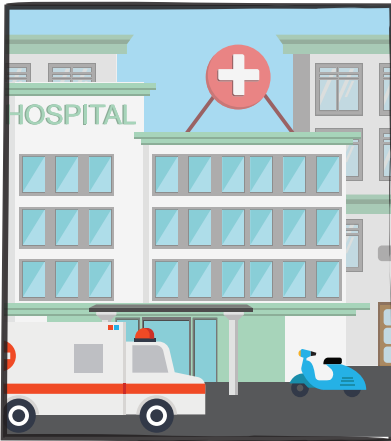
1. CONTINUING HEALTH COVERAGE
2. WOUND CARE SUPPLIES
4. ANCIENT CHINESE MEDICINE
5. WOMEN'S HEALTH DOCTOR (ABBR.)
6. DOCTOR FOR BACK THERAPY
9. LOTION FOR SOLAR PROTECTION

ACROSS

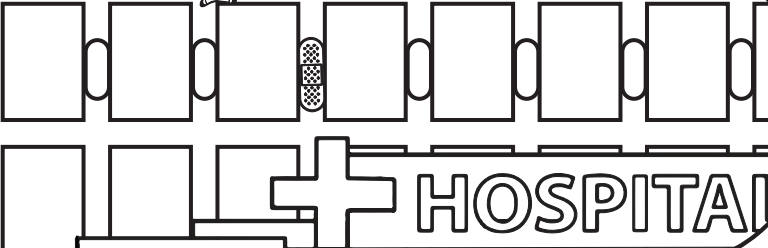
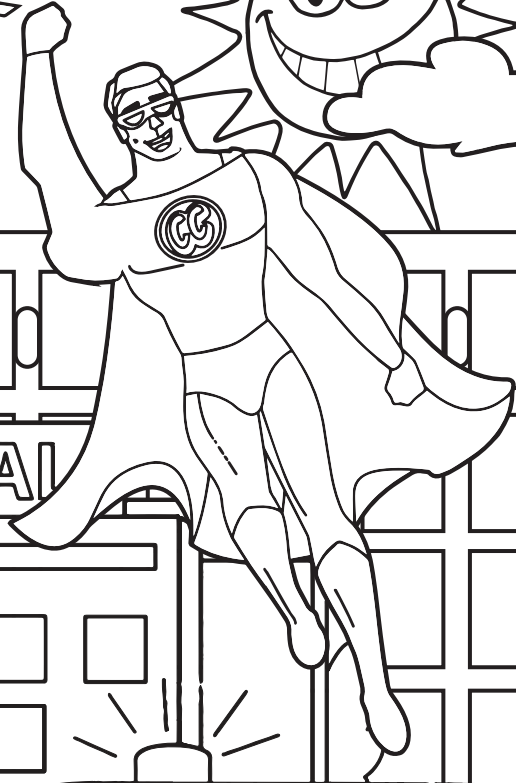
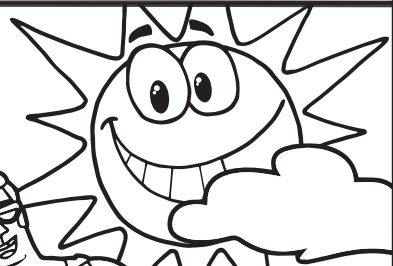
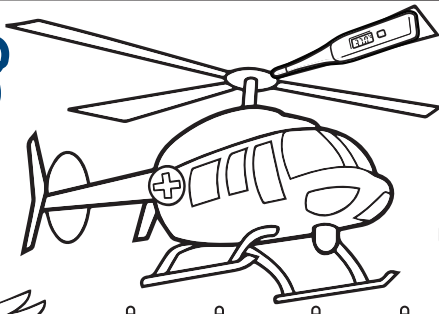
3. READING ASSISTANCE FOR THE BLIND
7. SERVICE ANIMAL
8. ELECTIVE PROCEDURE FOR MALE STERILITY
10. BREATH OF LIFE
11. MEDICINE FOR DIABETICS
12. HELPS WITH MOBILITY; USE UNDER ARMPIT
13. REPLACEMENT TEETH
14. PICTURE OF YOUR BONES OR TEETH



**CG EPISODE 3: CAPTAIN'S ORDERS**



# FIND THE SHAPES



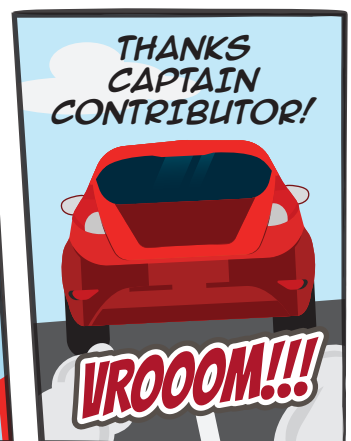
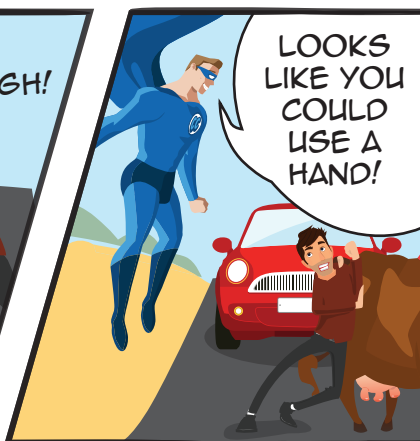
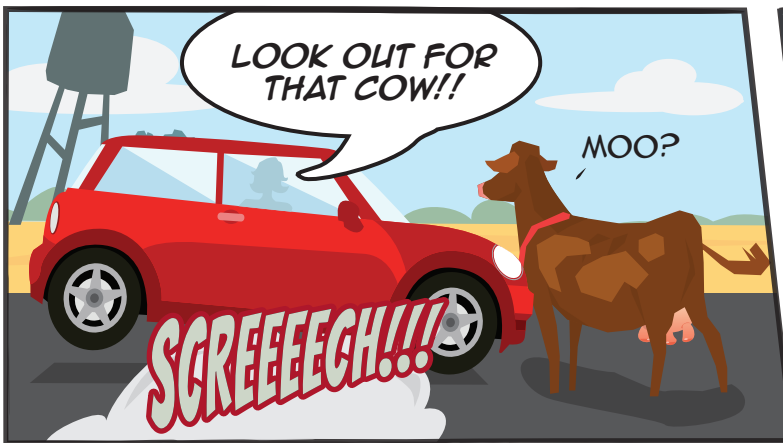
HOSPITAL



MZ

MZ

**CC** EPISODE 4: A LABOR OF LOVE



For more Adventures of **Captain Contributor**, and how you can make the most of your hard earned dollars, ask your third party administrator about **DCAP, FSAs, and Transit accounts**.

Visit **[captaincontributor.com](http://captaincontributor.com)** for more adventures, or follow him on social media:



- @captcontributor
- captaincontributor
- facebook.com/captaincontributor

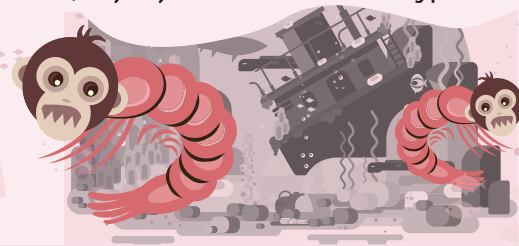
# SEA-PRIMATES

It's the real live primate you grow yourself

It's ABSOLUTELY AMAZING! Just add water to the tank, toss in the Sea-Primate eggs, and watch as baby primates hatch before your eyes! They are CUTE, they GROW, they PLAY, but be careful, they may BITE. The least entertaining pet ever!

## INCLUDES:

Every Sea-Primate kit includes a leaky jar, feeding spoon, Sea-Primate eggs, Sea-Primate food, bandages, and a manual for training your pet primates.



YOU'LL BE AMAZED!

# X-RAY SPECS

Put them on and reveal what's hidden!  
See through clothes, skin, walls, and MORE!

# HYPNOSIS

Learn the art of Hypnosis!

You'll be amazed how easy it is to hypnotize anyone into accepting your suggestions. With the snap of a finger, astonish your friends with stunts of hypnotic wonder at YOUR EVERY command!

# PROJECTING DECODER RING

Decode your own secret messages as they are projected onto any surface with this amazing **Projector Decoder Ring!** Simply point and shoot and you'll be decrypting codes in no time!



EASY to use

# TRIVIA

What is tax-free for HSAs?

- A. Contributions
- B. Withdrawals for eligible expenses
- C. Interest/investment earnings
- D. All of the above

Answer: D. All of the above.

# GIANT ANT FARM



This wall-sized GIANT ANT FARM will be the toast of your town! Watch the little giants dig their tunnels, it's miles of fun!

# THANKS FOR READING!

This comic book is provided by your third party administrator in conjunction with DataPath, Inc. It may not be reproduced for any reason without express written consent.

**DataPath**

© Copyright 2023  
DataPath, Inc. | dpath.com  
v112723



Order your very own carnivorous plant! It's a natural deterrent to pests, and a great conversation piece. **You'll be entertained for several seconds!**

None of this is actually for sale. Surely you realize it's simply for entertainment purposes.

**beneliance**

**Customer Service**

Toll-Free 877-685-0655  
[benefits@beneliance.com](mailto:benefits@beneliance.com)  
[beneliance.com](http://beneliance.com)  
PO Box 55068  
Little Rock, AR 72215